



50

- A – LIST OF THE DOCUMENTS COVERING THE ELECTRICAL INSTALLATION OF A VEHICLE
- B – DESCRIPTION OF AN ELECTRICAL DIAGRAM
- C – HOW TO READ AN ELECTRICAL DIAGRAM
- D – SYMBOLS
- E – COLOUR CODE

A – ELECTRICAL INSTALLATION OF A VEHICLE

Documents covering the electrical installation :

- parts list;
- list of the wiring harnesses and connectors;
- circuit diagram;
- wiring diagram;
- supply and junction box;
- fuse chart;
- chart of the bulbs.

B – CONTENTS AND DESCRIPTION OF AN ELECTRICAL DIAGRAM

Contents :

An electrical diagram consists of 2 parts :

- a circuit diagram, complete, for the function concerned;
- the corresponding wiring diagram.

Description :

• **The circuit diagram** presents the various circuits in a functional way :

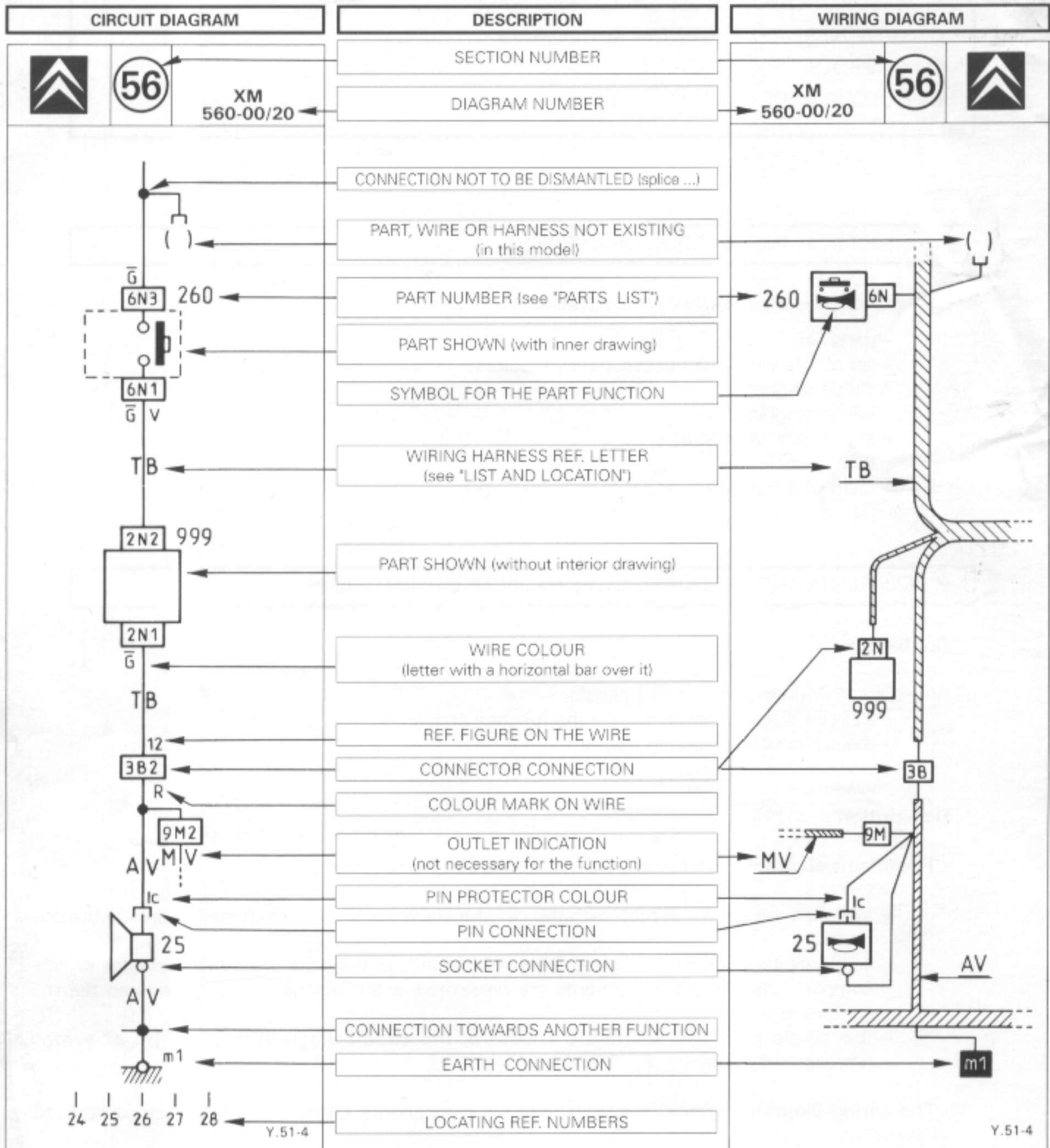
- switches are shown at rest, with the car at a standstill, the anti-theft switch on and the doors closed;
- single switches must be moved from right to left. In the case where the selector switch is complex, the contact movements are presented in the manner to be considered the most comprehensible ;
- the single electrical elements appear in the circuit diagram in the form of symbols represented in chapter E.

• **The wiring diagram** indicates the location of the components, connections and electrical harnesses in the vehicle.

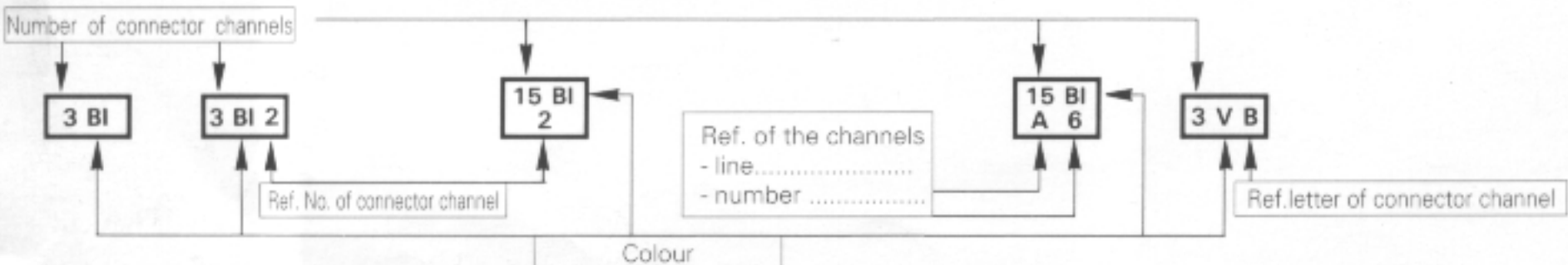


C - HOW TO READ AN ELECTRICAL DIAGRAM

Circuit and wiring diagrams coding (the following example is fictitious, it should not be used for repair operations).



Connector coding : A connector can be referenced by 2, 3 or 4 symbols :

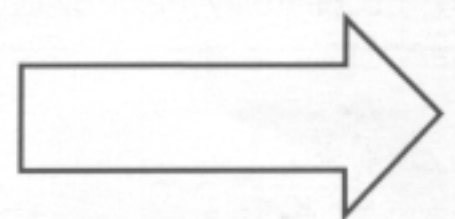




50

D - SYMBOLS

- Description of the symbols





No.	Description	No.	Description
1	Socket connection	32	Warning lamp
2	Pin connection	33	Light bulb
3	Connector connection	34	Double-filament light bulb (LED)
4	Connector connection (with index for differentiation)	35	Light emitting diode)
5	Junction not to be dismantled (splice)	36	Photo-diode
6	Junction not to be dismantled (with other connection possibilities)	37	Diode
7	Socket earthing	38	Fuse
8	Connector earthing	39	Thermal circuit breaker
9	Part body earth connection	40	Screening
10	Switch (non automatic return)	41	Battery cell
11	Manual switch	42	Suppressor
12	Selector switch	43	Motor
13	Switch open at rest (automatic return)	44	2-speed motor
14	Switch closed at rest (automatic return)	45	Alternative power generator
15	Manual contact switch	46	Sound equipment (horn, loudspeaker)
16	Mechanical contact switch	47	Electronic control unit
17	Pressure contact switch	48	Delay unit
18	Thermal switch	49	Part framing (with its circuit diagram)
19	Contact delayed on opening	50	Part framing (with its circuit diagram)
20	Contact delayed on closing	51	Part extract
21	Friction contact switch	52	Part extract
22	Manual contact switch(cigar-lighter with resistance)	53	Indicator
23	Resistance	54	Thermocouple
24	Rheostat	55	Electrodes
25	Manual rheostat	56	Oxygen sensor
26	Mechanical rheostat	57	Supply socket
27	Temperature rheostat	58	NPN transistor
28	Pressure rheostat	59	PNP transistor
29	Rheostat	60	Connection indicating line
30	Shunt	61	No extremity
31	Coil (relay, electrovalve)		



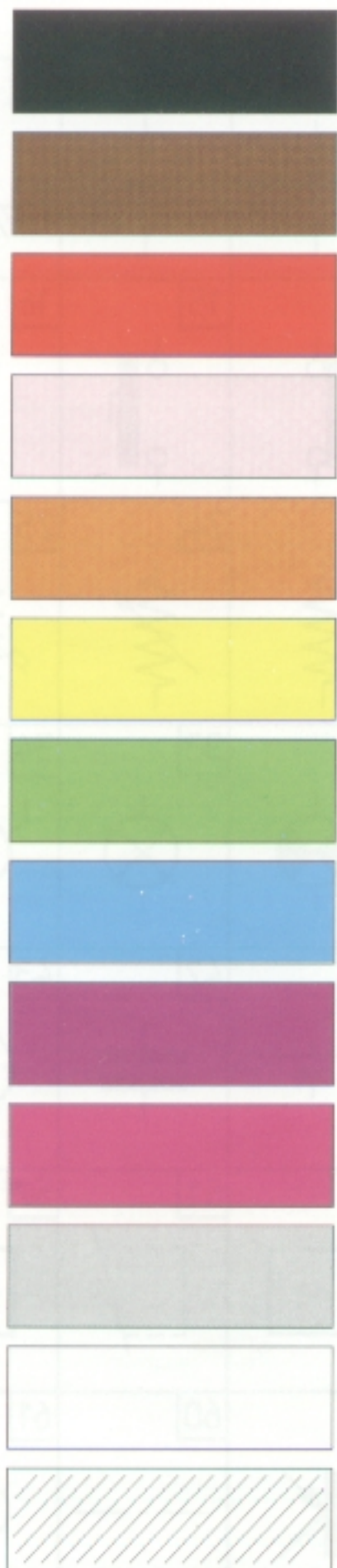
50



1	2	3	4	5	6	7	8	9
10	11	12	13	14	15	16	17	18
19	20	21	22	23	24	25	26	27
28	29	30	31	32	33	34	35	36
37	38	39	40	41	42	43	44	45
46	47	48	49	50	51	52	53	54
55	56	57	58	59	60	61		



E



N

M

R

Ro

Or

J

V

Bl

Mv

Vi

G

B

lc